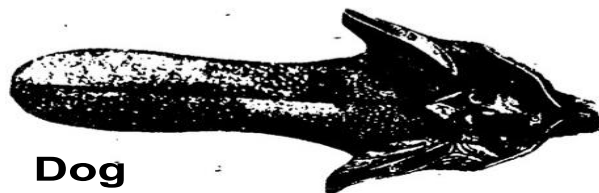
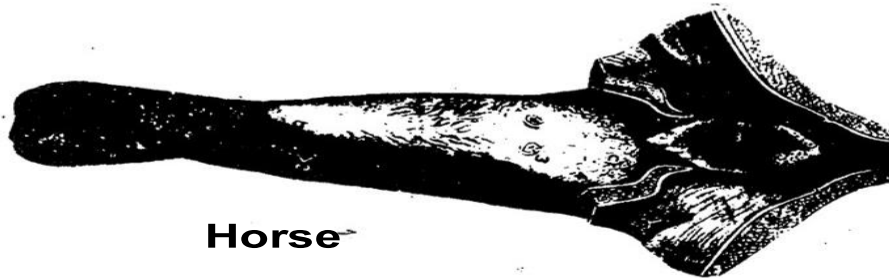
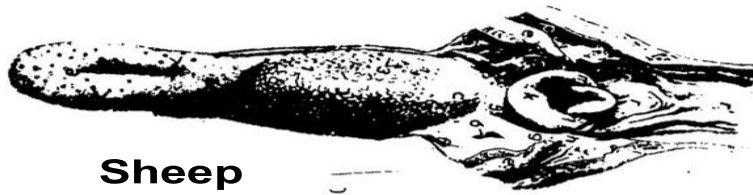
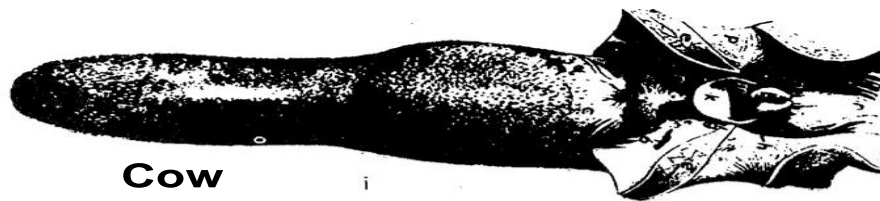


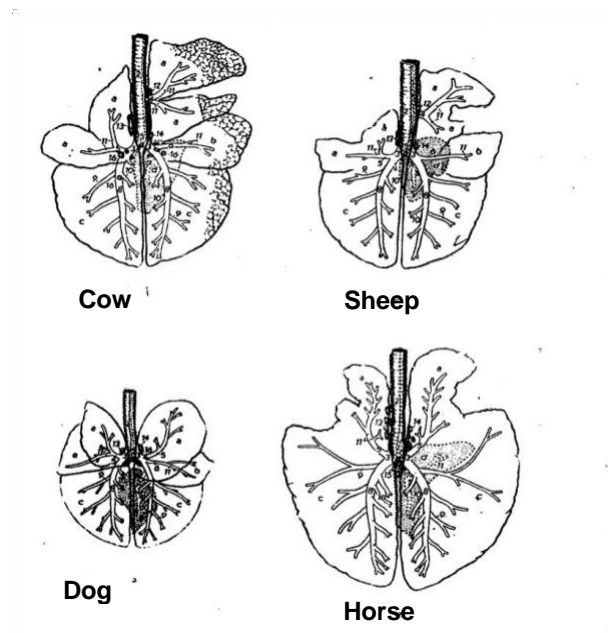
## Comparative anatomy of viscera of animals

Tongue in cattle characterized by the presence of nipples paper fork on its surface and going to the back where give it texture coarse and be tip tapered while in sheep the tip of the tongue semicircular and has an indentation. There are extrusion on the upper surface be disconnected the tongue from the front and be less pronounced in sheep than in cattle while there are no high in the tongue of the horse and be flat shape. Can be seen some black pigments in the tongue of cattle and sheep while no pigments in horse's tongue.



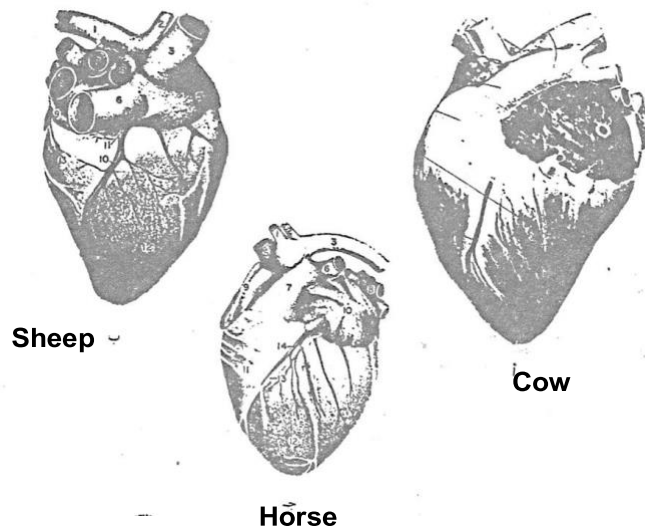
## Lungs:

Both lungs are divided into several lobes. The right lung in cattle and sheep consists of four or five lobes, while the left lung consists of three lobes. The right lung in the horse is composed of three lobes while the left lung consists of two lobes. The trachea in cattle and sheep leads to an additional apical lobe. The lobulation on the surface of the lungs in cattle is clear and significant, particularly in elderly animals, due to an increase in connective tissue between the lobules.



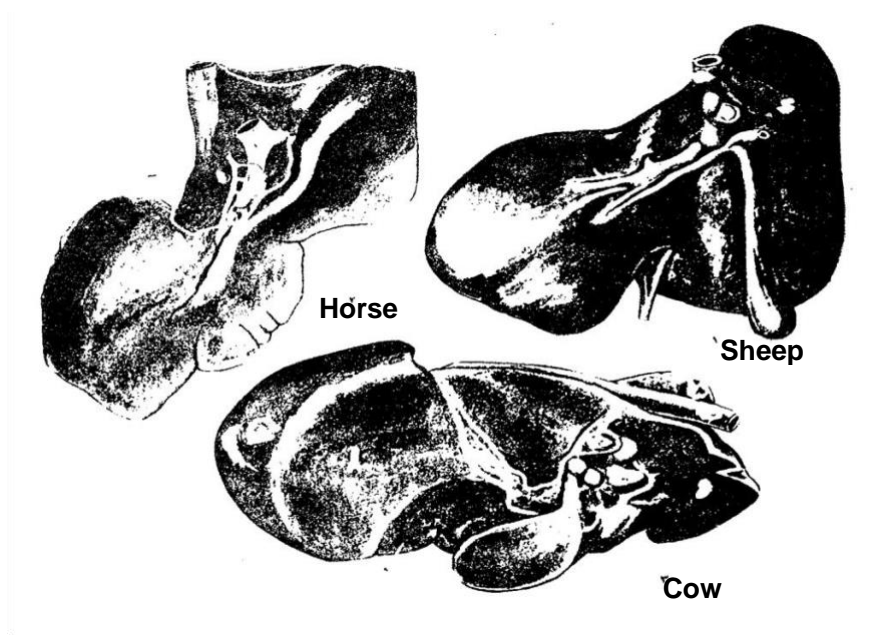
## Heart:

The heart in the sheep has equilateral triangle shape and peak pointed with fat, white in color and cohesive strength. The heart in the cattle have more elongated and pointed peak. Horses have conical heart. The fat on the heart of cattle and horses have yellow and soft and the fat in the heart of horses characterized as brilliant and viscous. The heart of the camels contains coronal groove that separated the ventricles from atria and groove separated the ventricles into right and left. The heart of cattle as well as sheep contains two compositions bony structures in the base when the aorta, one right and the other left.



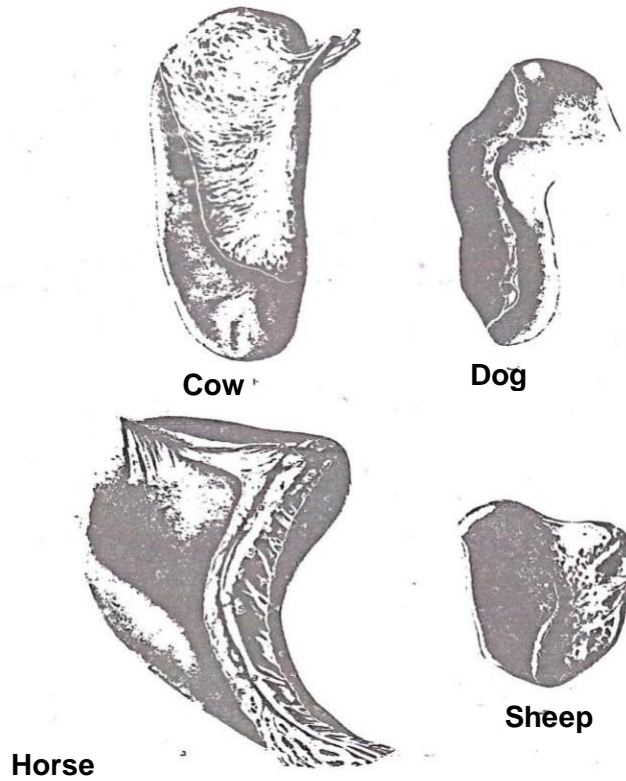
**Liver:**

The liver consist of three lobes: left, right and tail, but this division is not entirely clear in horses. Caudal lobe in sheep characterized tapered nor exceed the length of the lower edge of the liver as well as in cow in addition to that the end be rounded. The gall bladder pearls in cow while being longitudinally in sheep, there is no gall bladder in horses and camels.



**Spleen:**

Spleen has shape as oysters in sheep while the crescent-shaped or sickle in horses and camels, while the lengthwise and flat with rounded end in cows.



**Kidneys:**

The forms of the kidneys varies by type of the animal, left kidney may differ from the right in some animals:

Camels	Horses	Sheep, dog, and pig	Cow
Right kidney is like a seed beans Left kidney is like a human ear	Right kidney take the form of heart Left kidney like seed beans	Right and left kidney like seed beans	Right and left kidney lobular

